

Anatomical Discovery of Meridians and Collaterals

Yuan Lin, MD; Bai Yu, MD

Department of Anatomy, Southern Medical University, 510515, China.

Tel: 00862061648637, 00862062841738, Mobile: 008613450368132. Fax: 00862061648637.

E-mail: yuanl@fimmu.com ; doctorbaiyu@yahoo.com.

BACKGROUND Meridian theory is a fundamental of traditional Chinese medical science. The interpretation of the anatomical substance of meridian is a long-term aim of the scientific community. With further in-depth study of the meridian, the majority of scientists are aware that the fascia and connective tissue correlate with the meridian acupuncture points. However, the existing system of regional anatomy and systematic anatomy study cannot fully explain the anatomical issue of the meridian. Many researchers found that the distribution of acupuncture points and meridians of the body are closely related to the fascia connective tissue. During evolutionary process of organisms from simple to complex, from extracellular matrix of the single layer organisms, middle lamella of two germ layers organisms, mesenchyma of the three embryonic layer organisms to the higher animals, the body's connective tissue are all homologous structures. According to these biological patterns, organisms can be divided into both the functional system which consists of differentiated cells as well as the supporting and storing system which is composed of undifferentiated cells. Human body consists of supporting and storing system which is derived from the non-specific connective tissue and functional system which is composed of differentiated cells. This method of research which is based on these two systems and investigates the structure of human body is called fascial anatomy. The research field which is based on the relationship of the two systems is called fasciaology. It puts forward a new perspective of research and lays the biological foundation of the theoretical research of traditional Chinese medical science.

METHODS 1. The study of digital human being. The virtual meridians and points had been constructed through the mark, dissection, reconstruction and perspective processing on the fascia converging areas of the trunk and limbs based on the digital dataset of VCH-M1 (Virtual Chinese Human-Male1) and VCH-F1 (Virtual Chinese Human-Female1). 2. The creation of computerized auto-marks. We extracted the muscles and eliminated noise, detected the edges and found the convex hull of the muscles edge and marked the interstitial connective tissue points in the cross section images from the digital dataset of the left leg of VCH-M1. The auto-marked images were reconstructed by 3D-DOCTOR. 3. CT imaging. 4. MRI imaging.

RESULTS The result shows that marks at three-dimensional reconstruction between human limbs and muscle in the part of connective tissue areas show strong consistency with the meridian running in the structure of the image. This together with our anatomy observation on cadaver specimens of the meridian acupuncture points confirmed that the distribution of the human body meridians and points are in connective tissue where they can generate strong biological information at the site.

CONCLUSION In this study, we found that the anatomical basis of the meridians is the fascial network of human body. The histological composition of Meridian is the non-specific connective tissue (including loose connective tissue and fat tissue). Acupuncture points are the parts which produce strong biological reaction when stimulated. A new anatomical approach and academic research are put forward. In view of fascial anatomy, human body is constituted of a supporting and storing system which is composed of non-specific connective tissue network and a functional system which is composed of differentiated cells. The study on supporting and storing system as well as the mutual relationship between the supporting and storing system is called fasciaology.

DISCLOSURE The work described in this paper was supported by the following funding agencies: The National Basic Research Program (also called 973 Program) (Grant No.2007CB512705). National Natural Science Foundation of China (Grant No.30801464). National Hi-tech Development Program of China (863 Program) (Grant No.2001AA231031, 2002AA231021) and Key Sci-tech Research Project of Guangdong Province (Grant No.2002B30611).

- [1] Yuan L, Yao D W, Tang L. A study on morphological basis of Chinese acupuncture and moxibustion from Digital Human Body. *Acta Anatomica Sinica* (in Chinese) 2004, 35(14): 337-343.
- [2] Yuan L, Jiao P F, Tang L, et al. Yuan L in, Jiao Pe ifeng, Tang Lei, Huang Wen hua. *Anatomical Basic of Traditional Chinese Medical Channels*. *China Basic Science* (in Chinese), 2005, 03: 44-48.
- [3] Yuan L, Wang J, Wang C L, et al. Fasciology: A New Theory on the Human Self- supervision and Control System. *Science & Technology Review* (in Chinese), 2006, 24(06): 85—89.
- [4] Yuan L, Tang L, Huang WH, et al. Construction of dataset for Virtual Chinese Male No.1. *Di Yi Jun Yi Da Xue Xue Bao*. 2003 Jun; 23(6):520-3
- [5] Yuan L, Zhong S Z. Human Auto-testing and modulat ing system——anatomic basis involved in meridional system. *Tianjin Journal of Traditional Chinese Medicine* (in Chinese), 2004, 21(5): 356—359.
- [6] Yuan L , Tang L , Huang WH , et al. Construction of dataset for virtual chinese male No.1. *J First Mil Med Univ* , 2003 , 23 (6) :520—523.
- [7] Wang C L, Bian J, Yuan L, et al. A digital study on the morphologic comparability between meridians and rebuild fascia lines in the VCH-M1's lower limb. *Acta Anatomica Sinica* (in Chinese), 2008, 39(2): 219—222.
- [8] Wang C L, Wu J P, Wang J, et al. An interpretation on the essence of meridians and acupuncture mechanism from fasciaology view. *Chinese Journal of Basic Medicine in Traditional Chinese Medicine* (in Chinese), 2008, 14(4): 312—314.
- [9] Wang J, Dong WR, Wang CL, et al. From meridians and acupoints to self-supervision and control system: a hypothesis of the 10th functional system based on anatomical studies of digitized virtual human. Wang J, Wang CL, Yuan L. *Nan Fang Yi Ke Da Xue Xue Bao*. 2007 May;27(5):573-9
- [10] Wang J, Wang CL, Yuan L, et al. Explanation of essence and substance basis of channels and collaterals with fasciaology. *Zhongguo Zhen Jiu*. 2007 Aug;27(8):583-5
- [11] Wang C L ,Yuan L ,Wang J ,et al. Contrast study on the line course of fascia meridians made by three dimensional reconstruction and classical meridians in human body. *Chinese Journal of Anatomy* (in Chinese), 2007, 30(3): 340—343.
- [12] Huang Y, Yuan L, He Z Q, et al. Study on the meridians and acupoints based on fasciaology: an elicitation of the study on digital human being. *Zhongguo Zhen Jiu* (in Chinese), 2006, 26(11), 785—788.
- [13] Jiao PF, Yuan L, Lu YT, et al. Registration of the image data of the Virtual Chinese Female No.1. *Di Yi Jun Yi Da Xue Xue Bao*. 2003 Jun; 23(6):532-4
- [14] Zhong SZ, Yuan L, Tang L, et al. Research report of experimental database establishment of digitized virtual Chinese No.1 female. *Di Yi Jun Yi Da Xue Xue Bao*. 2003 Mar; 23(3):196-200.
- [15] Zhong SZ, Yuan L. Current problems in the data acquisition of digitized virtual human and the countermeasures. *Di Yi Jun Yi Da Xue Xue Bao*. 2003 Jun; 23(6):517-9.
- [16] Fan JH, Li PJ, Yuan L, et al. Establishment of Internet-based database of the Virtual Chinese Human dataset. *Di Yi Jun Yi Da Xue Xue Bao*. 2003 Jun; 23(6):530-1.

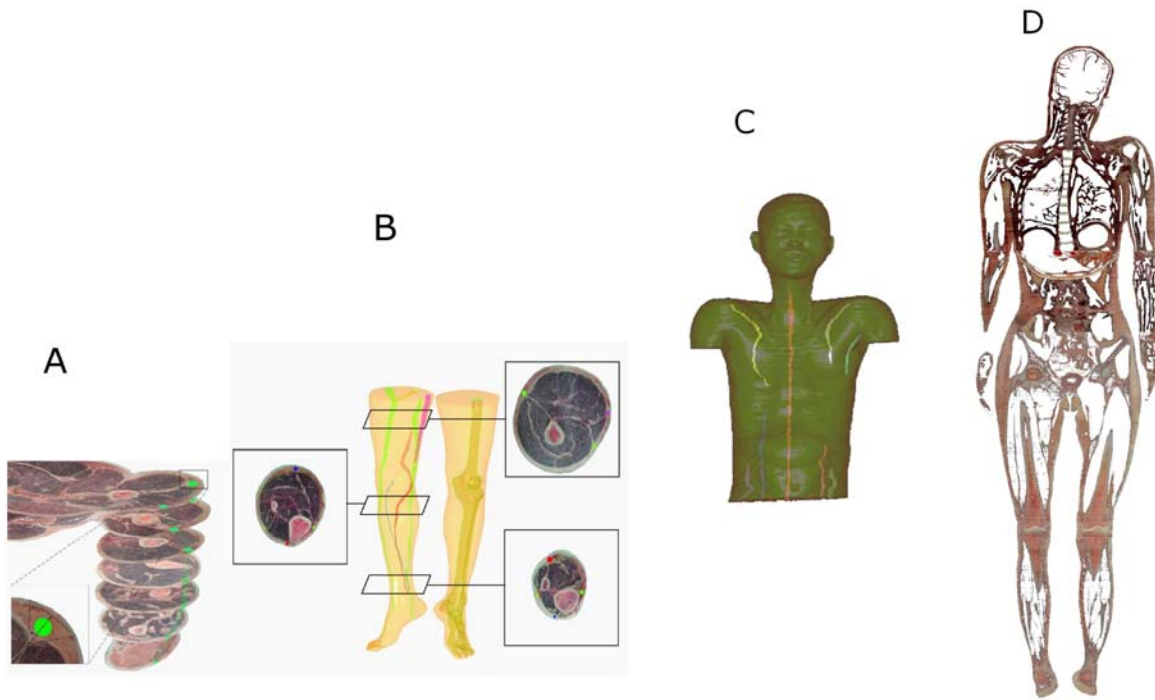


Fig. 1

The connective tissues in VCH images were marked and their 3-D structures were rendered (Fig. 1A to C). When fascia connective tissues of the whole body were marked and their 3-D structures were rebuilt, a complete fascia network was observed as in the Fig. 1D.

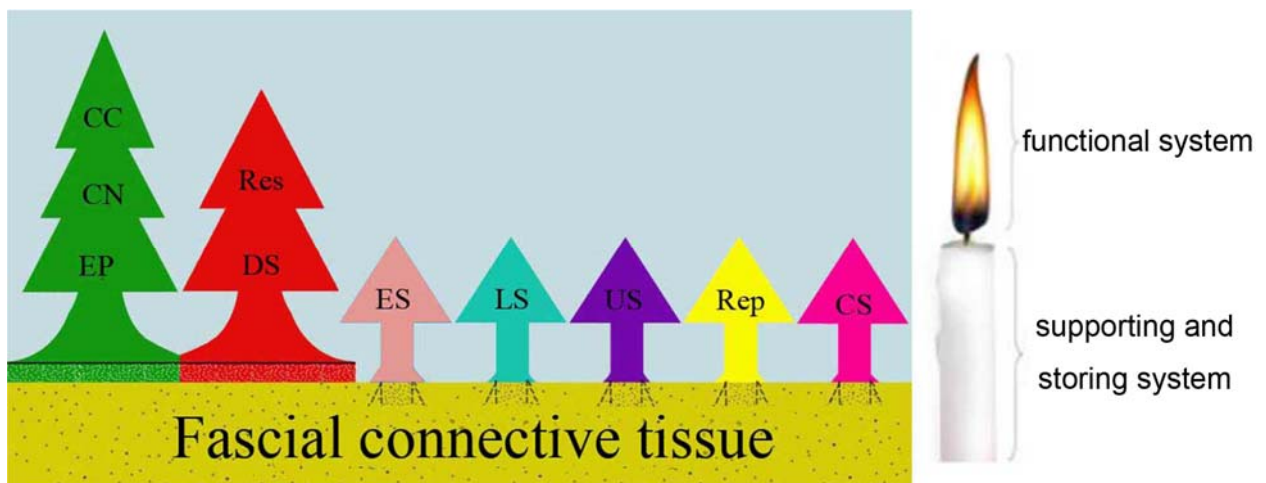


Fig. 2

CC: cerebral cortex; CN: central nerve; EP: epidermis; Res: respiratory system; DS: digestive system; ES: endocrine system; LS: locomotor system; US: urinary system; Rep: reproductive system, CS: cardiovascular system, FCT: Fascial connective tissue. We can see in this schematic diagram, the living condition of an organism is just like a lightening candle, the fascial system (unspecialized connective

tissue network) is equivalent to the stick of a candle and the functional system is equivalent to the flame of a candle.

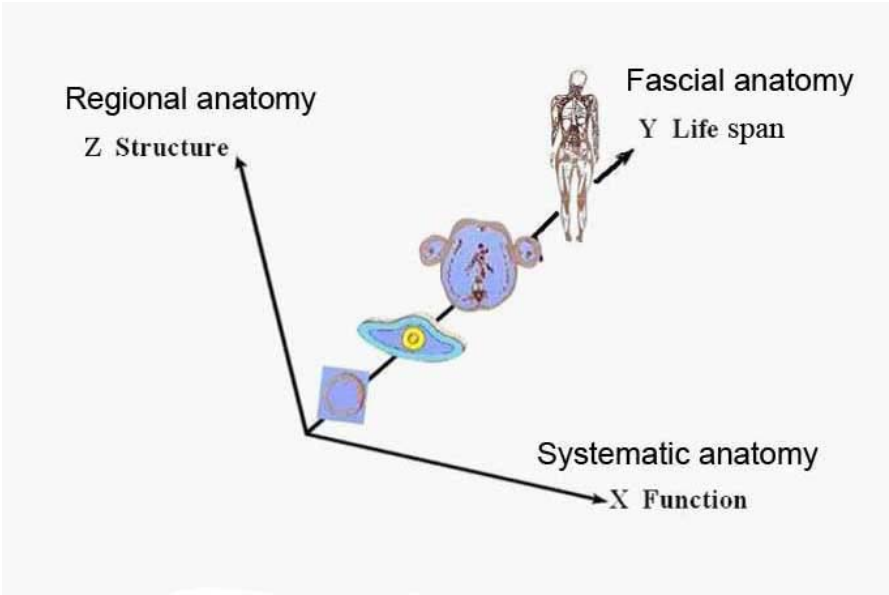


Fig. 3
The relationship between the fascial anatomy and systematic anatomy, regional anatomy.